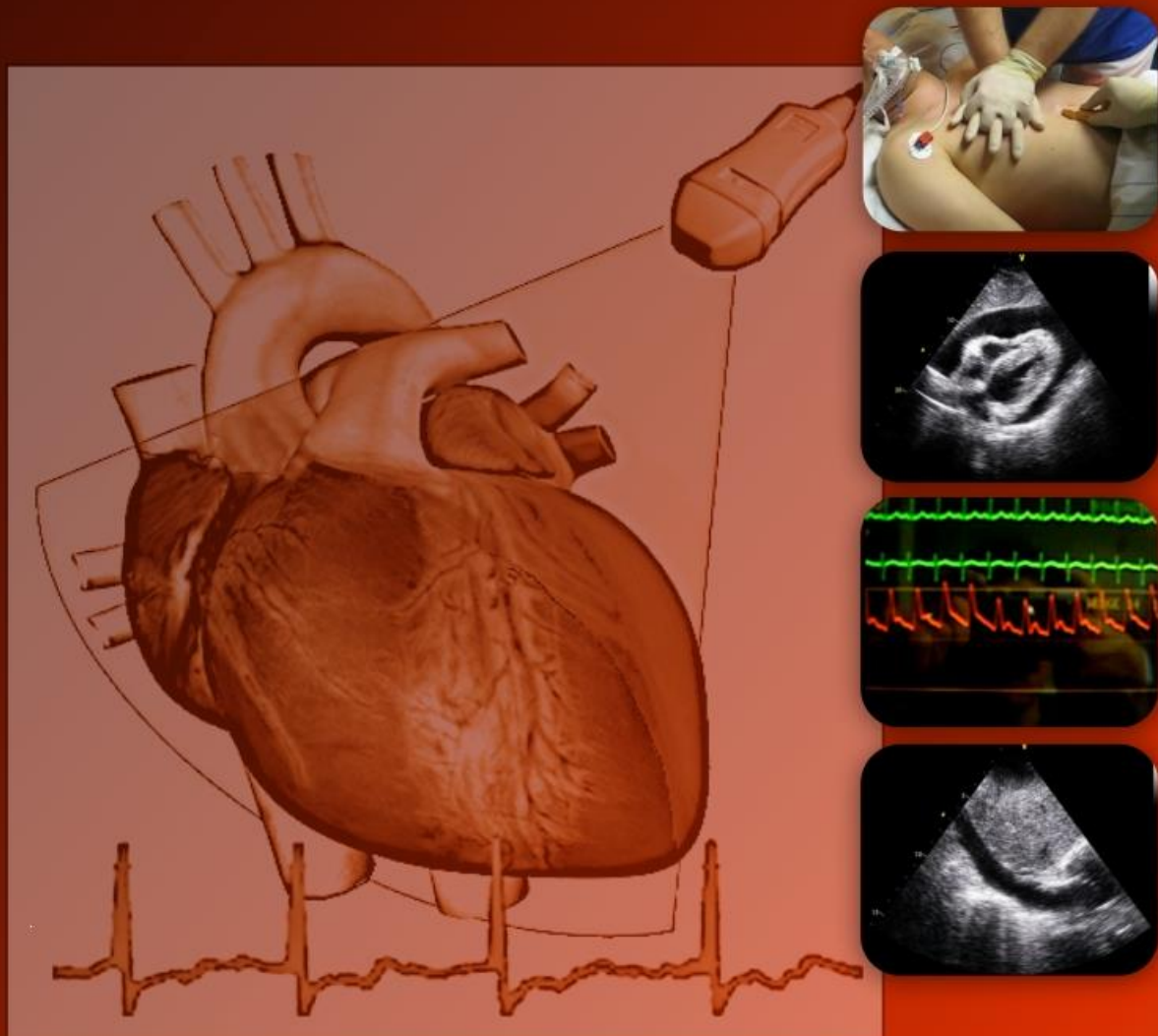
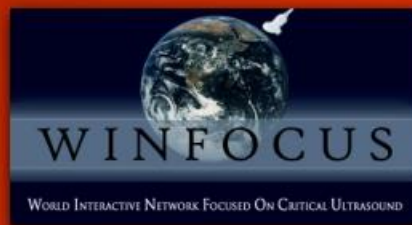


# WINFOCUS' FOCUSED CARDIAC ULTRASOUND ( WBE )



Based on the “*International Evidence Based Recommendations for Focused Cardiac UltraSound*” published on JASE 2014”

**An International Course for Emergency, Intensive and Critical Care physicians  
designed and organized by WINFOCUS ([www.winfocus.org](http://www.winfocus.org))**



prepares to WBE  
International  
Certification

TOKYO – February 23-24th, 2020

A course on Focused Cardiac Ultrasound (FoCUS) specifically designed for Intensive, Critical Care and Emergency Physicians. The course is targeted at physicians who are new to cardiac ultrasound, and covers the use of limited Transthoracic Echocardiography (TTE) in the setting of cardiac arrest/peri-resuscitation, and as a screening tool for the unstable patient in the ICU/emergency. It might also be of interest to more Echocardiography-experienced clinicians wishing to make their assessment of the critical patient more effective. The course (formerly known as Winfocus Basic Echo, WBE) after having reached its 60th edition since 2008, being delivered in more than 25 countries worldwide, is now presented in its updated, brand new format. Its content is conform to the proceedings of the 1st International Conference on Focused Cardiac UltraSound (Via G. International Evidence-Based Recommendations for Focused Cardiac Ultrasound - J AM SOC ECHOCARDIOGRAPHY 2014; 27: 683.e1-683.e33). It's pre-requisite for WINFOCUS WBE international certification.

The faculty gathers reknown experts in the use of and training in point-of-care ultrasound,

### **Directors**

Arif Hussain (President WINFOCUS,  
Riyadh, Saudi Arabia)  
Toru Kameda (Nagano, JAPAN)

### **Consultants**

Nobuyuki Taniguchi (Tochigi, JAPAN)  
Akio Kimura (Tokyo, JAPAN)  
Takeshi Nomura (Tokyo, JAPAN)

### **Faculty**

Young-Rock Ha (Sungnam, KOREA)  
Hong-Chuen Toh (SINGAPORE)  
Gordon Lee (HONG KONG)  
Takeshi Nomura (Tokyo, JAPAN)  
Hirotsugu Yamada (Tokushima, JAPAN)  
Akihiro Suzuki (Tokyo, JAPAN)  
Tetsuari Onishi (Hyogo, JAPAN)  
Kenichi Katabami (Sapporo, JAPAN)  
Hirokazu Takei (Tokyo, JAPAN)  
Keika Hirose (Tokyo, JAPAN)

Endorsed by:



Japan Society of  
Point-of-Care Ultrasound



World Interactive Network  
Focused on Critical UltraSound



Japanese Association for  
Acute Medicine

[www.winfocus.org](http://www.winfocus.org)



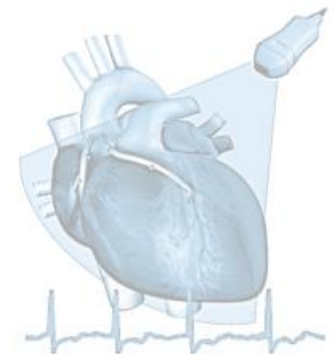
# WINFOCUS' FOCUSED CARDIAC ULTRASOUND ( WBE )



Venue: Center Hospital of the National Center for Global Health and Medicine, Tokyo

## February 23<sup>th</sup> FoCUS PRINCIPLES & FoCUS EXAM

- 7.45      *Registration*
- 8.15      **Welcome, course instructions**
- 8.30      **Focused Cardiac Ultrasound in Critical Care: aims and place in echocardiography training**
- 8.45      **FoCUS Views and Targets of the exam**
- 9.10      **FoCUS signs of Chronic cardiac disease**
- 9.30      **FoCUS signs of LV systolic dysfunction**
- 9.50      **FoCUS signs of RV systolic dysfunction**
- 10.10     *Coffee*
- 10.30     **HANDS ON TRAINING (HOT 1): Basic TTE views, Laptop training**  
6 WORKSTATIONS with healthy models, tutorial laptops  
*(All faculty)*
- 13.10     *Lunch*
- 14.00     **FoCUS signs of severe hypovolemia**
- 14.20     **FoCUS signs of pericardial effusion and tamponade**
- 14.40     **FoCUS signs of obvious valvular pathology**
- 15.00     *Break*
- 15.10     **HANDS ON TRAINING (HOT 2): TTE views wrap up, ALS Megacode, Laptop training, Shock Megacode**  
5 WORKSTATIONS with healthy models, tutorial laptops, ACLS mannequins      *(All faculty)*
- 18.10     *End of first day*



## February 24th FoCUS IMPLEMENTATION INTO CLINICAL SCENARIOS

8.00	Basic cardiac ultrasound knobology
8.25	Focused Cardiac Ultrasound in cardiac arrest
8.45	Focused Cardiac Ultrasound in shock
9.10	Focused Cardiac Ultrasound in respiratory failure
9.30	Pitfalls and limitations of Focused Cardiac Ultrasound
9.50	Lung ultrasound in cardiac arrest & shock: pneumothorax, “wet lung”
10.15	<i>Coffee</i>
10.40	Additional: FoCUS integration in the whole body ultrasound approach to shock and respiratory failure
11.00	The WINFOCUS Basic Echo (WBE) certification pathway
11.15	<b>INTERACTIVE CASE SESSION</b>
12.00	<i>End of Course &amp; Certificate distribution</i>

(13.00-16.00 International Symposium, The Future of Focused Cardiac Ultrasound)

